



4 in 1+ Bezel Kit Installation Guide



For
Series 2500
and 2700
Bill
Validators

The 4 in 1+ Bezel replaces the existing 3 in 1 or 4 in 1 bezel.
There is **NO** ribbon cable used on the 4 in 1+ Bezel.

General Information

MEI has a new **4 in 1 +** bezel that is used with MEI Advance 5xxx Telemeter. All three of these bezels use the same style 5 pin plug to connect to the ADV 5xxx telemeter. It performs just like the previous bezels with a few additional features:

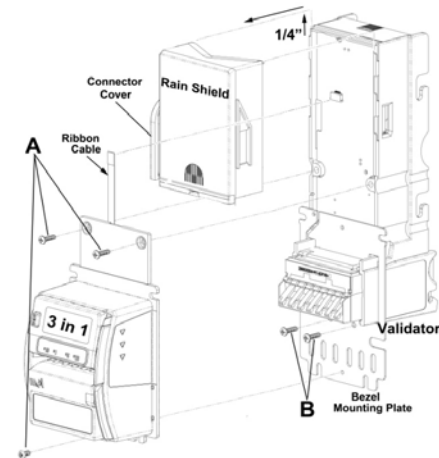
- Magnetic stripe cards
- NFC contactless cards
- Some mobile devices enabled with NFC
- 3 buttons for Loyalty applications
- Ground Strap to connect to machine mounting stud

Please reference the appropriate section for removal and installation of 3 in 1 and 4 in 1 bezels.

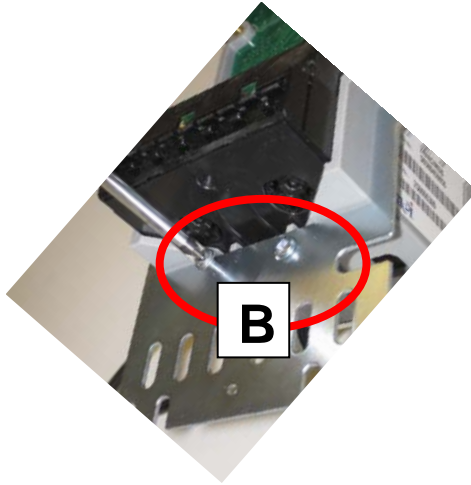
Removing the 3 in 1



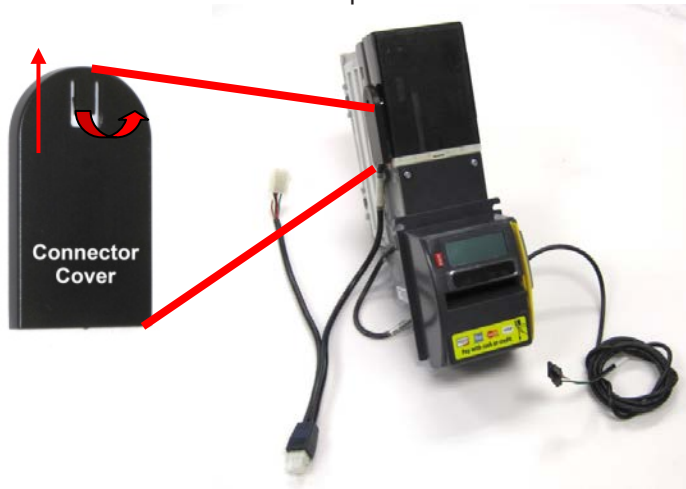
1. Turn **OFF** power to the machine
2. Disconnect the 6 pin MDB bill validator cable from the machine MDB harness.
3. Disconnect the other end of the 6 pin MDB pigtail from the bill acceptor to the Coin changer.
4. Disconnect the 5 pin cable of the credit card bezel from the Advance 5000 telemeter that is in the machine.
5. Disconnect and remove the bill validator from the vending machine by removing the four (4) - 11/32" nuts that hold the bill validator in the machine.
6. Remove the 3 phillips screws from the bezel (**ref. A below**) (2 screws at the top, 1 at the bottom)



7. Remove the 2 mounting screws (ref **B**) of the bezel mounting plate and discard the plate.

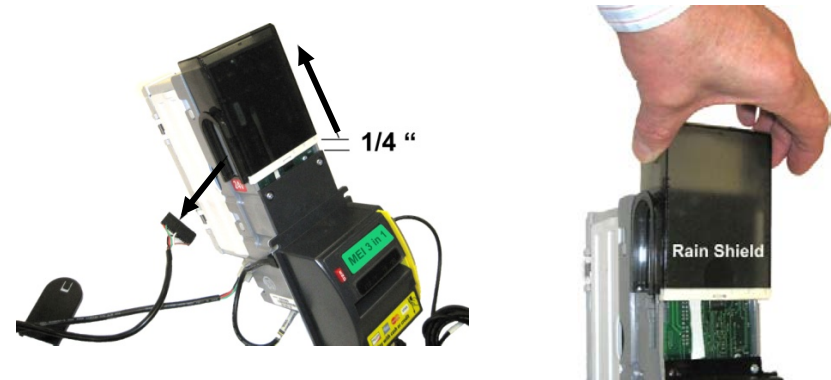


8. Slide the connector cover for the rain shield up and remove

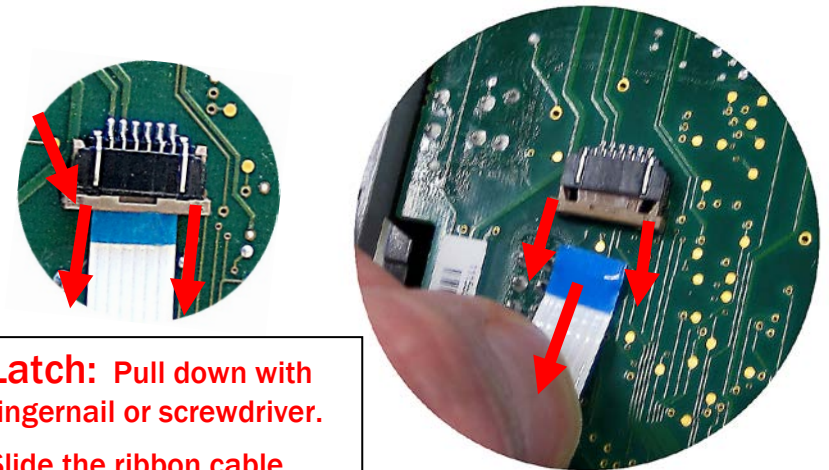


9. Disconnect the MDB cable (30 pin cable) on the side of the bill validator.

10. Slide the PCB cover ¼ inch towards the top of the validator and lift it off.



11. Disconnect the ribbon cable from the validator circuit board before lifting the old bezel off. **CAREFULLY**, Pull down the latch with your finger nail or a screw driver. **GENTLY**, pull the ribbon cable out of the socket.

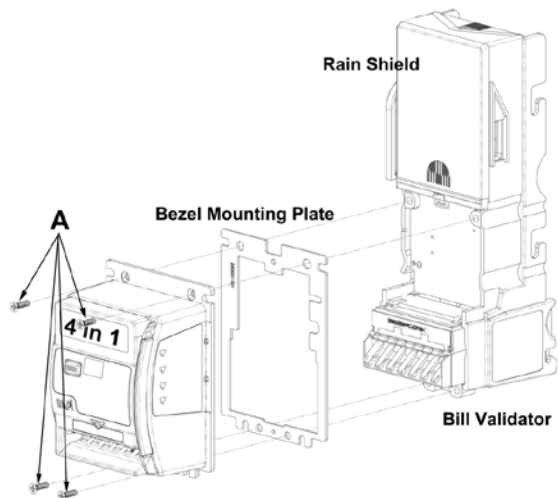


Latch: Pull down with fingernail or screwdriver.
Slide the ribbon cable down.

Removing the 4 in 1



1. Turn **OFF** power to the machine.
2. Disconnect the 6 pin MDB bill validator cable from the machine harness.
3. Disconnect the other end of the 6 pin MDB pigtail from the bill acceptor to the Coin changer.
4. Disconnect the 5 pin cable of the credit card bezel from the Advance 5xxx telemeter that is in the machine.
5. Disconnect and remove the bill validator from the vending machine by removing the four (4) - 11/32" nuts that hold the bill validator in the
6. Remove the 4 phillips screws (**Ref A**) from the bezel (2 screws at the top and 2 at the bottom) Set the bezel aside.
7. There are NO screws holding the bezel mounting plate to the validator. Remove the mounting plate and set aside.



Installing the 4 in 1 +



1. Re-install the PCB cover and the connector rain shield prior to installing the bezel. The cover slides under the bezel to prevent water from getting onto the PCB.

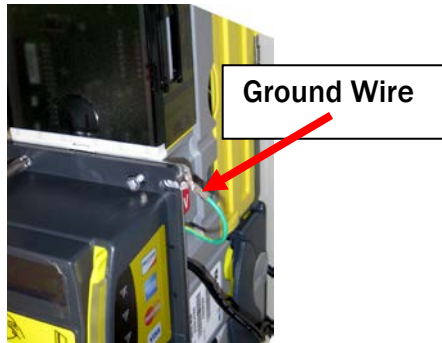


2. Place the mounting plate that comes with the 4 in 1 + Bezel and the Bezel onto the bill validator. Be sure to uncoil the ground wire and hang out to the side of the bill **acceptor**.

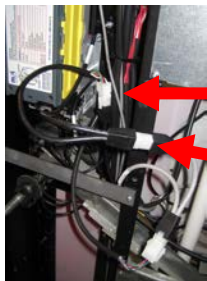




3. Insert and tighten the 4 phillips head mounting screws.
4. Be careful not to pinch or damage the bezel cables when installing the 4 in 1 + bezel.
5. Re-insert the 30 pin connection into the validator and replace the Rain Shield and Connector Cover.
6. Install the bill validator in the vending machine using the four (4) - 11/32" nuts that hold the bill validator in the machine. The ground wire should be connected, on the top **Left** screw, between the Validator and the vending machine wall. Make sure the ground wire has a bare metal connection.



7. Connect the bill validator MDB cable to the ADV5xxx telemeter and the other end of the MDB cable to the coin changer.



Connects the Bill Validator to Coin Mech

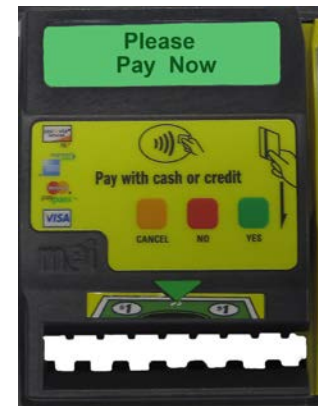
Connects the Bill Validator to ADV 5xxx

8. Plug the 5 pin cable from the 4 in 1 + Bezel into the ADV5xxx telemeter



Plug the 5 pin cable from the 4 in 1+ Bezel into the ADV5xxx telemeter.

9. Turn **ON** the power to the vending machine
10. When the 4 in 1+ Bezel is ready to operate, the "Runway Lights" will indicate where to swipe a credit card, the display will show "Please Pay Now", and the green LED triangle will be flashing.



FCC ID: QP8MEICARD3B

CAUTION: changes or modifications not expressly approved by the party responsible for compliance could void the user's authority to operate the equipment.

This device complies with part 15 of the FCC rules. Operation is subject to the following two conditions: (a) This device may not cause harmful interference, and (b) this device must accept any interference received, including interference that may cause undesired operation.

Contact MEI Technical Support @ 1-800-345-8172 with any questions.

MEI 3222 Phoenixville Pike, Suite 200, Malvern, Pa. 19355

©2014 MEI Inc.

www.meigroup.com